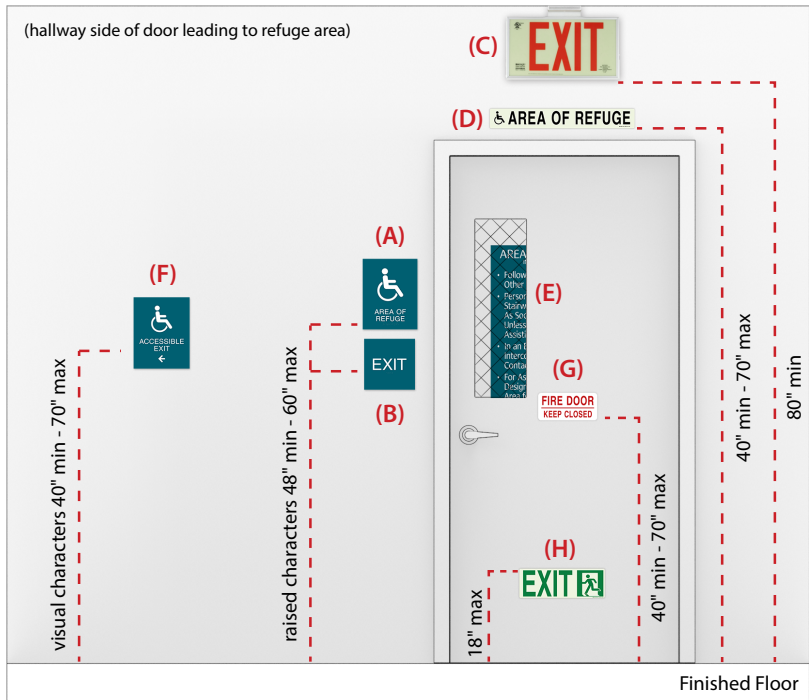


# EXIT STAIRS & AREA OF REFUGE/RESCUE

## STANDARD PRODUCT REFERENCE GUIDE



(A) **Area of Refuge Sign:** When an Area of Refuge/Rescue is required, a tactile sign should be installed next to the door leading to an Area of Refuge or Exterior Area of Rescue.

(B) **Exit Sign:** A tactile exit sign is required to be installed if the door also serves as part of an exit egress path. Multiple layout options are available.

(C) **Overhead Exit Sign:** An overhead exit sign that is illuminated is required if the door also serves as part of an exit egress path. Multiple photoluminescent versions are available.

(D) **Photoluminescent Area of Refuge Sign:** An illuminated Area of Refuge/Rescue sign should be installed near the door leading to the refuge area.

(E) **Area of Refuge Instructions:** When an Area of Refuge/Rescue is required, you must post instructions within the Area of Refuge or Exterior Area of Rescue.

(F) **Accessible Directional:** This sign is used when needed to indicate the direction of the nearest Accessible Exit or to direct people to the Area of Refuge.

(G) **Fire Door Sign:** Place on both sides of a fire door. Two wording options available based on the function of the door.

(H) **Low-Level Photoluminescent Egress Sign:** Multiple versions are available to indicate exit doors, accessible paths, egress path direction, or dead-ends. These signs should be installed below the smoke-line.

### Area of Refuge

### Exterior Area of Rescue

### Photoluminescent

AREA OF REFUGE/RESCUE (A/D)	<p>ARA##</p>	<p>EARA###</p>	<p>NFPA-PVC322-ARA</p>
	<p>OVERHEAD EXIT SIGN (C)</p>	<p>or</p>	<p>NFPA-PVC522-EARA</p>

The sign samples shown are representations and may look different for each sign collection and brand.

AREA OF REFUGE INSTRUCTIONS (E)

AR1812

**AREA OF REFUGE**  
INSTRUCTIONS

- Follow Exit Signs to Other Means of Egress.
- Persons Able to Use Exit Stairways Should Do So As Soon As Possible, Unless They Are Assisting Others.
- In an Emergency, Push Intercom Button to Contact the Operator.
- For Assistance, Wait in Designated Assistance Area for Help.



PFH110

**PUSH FOR HELP**

LOCATION: ELEVATOR  
FLOOR: 5

Persons able to use the exit stairway should do so as soon as possible, unless they are assisting others.

After activating the two-way emergency communication system, wait here for assistance.

EXIT EGRESS DOORS (B/G)

EG72-CA-1



RG21A



CR###



GSS-EG49



or



ACCESSIBLE DIRECTIONALS (F)

Accessible Directional w/ISA Symbol (DA###) - 8 Arrow Options



LOW-LEVEL EGRESS (H)

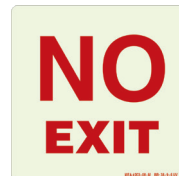
NFPA-PVC413-X#



NFPA-PVC44-ISA



NFPA-PVC55-NE



NFPA-PVC48-EE#



Some sign requirements may vary due to state or local codes. Please follow-up with your fire marshall.