

SIGN INSTALLATION GUIDE

PER ADA, NFPA, AND IBC CODES AND REQUIREMENTS

NFPA Stairway Identification Signs

1.) Check your walls:

- Before starting, verify the wall surface is smooth and free of any dirt or dust. Complete any wall treatments, such as wallpapering or painting, prior to sign installation.

2.) Determine the mounting height of your sign:

STAIRWAY IDENTIFICATION SIGN

- The stairway identification sign should be installed with the bottom of the sign 5 feet above the finished floor in a position that is free from obstructions and readily visible when the doors are in the open and closed positions. (See fig. 1)

TACTILE FLOOR LEVEL/EXIT LEVEL SIGNS

- Floor level signs are installed on the stairwell side of a door leading into the interior of the building. Exit signs are installed on the stairwell side of a door leading to the final exit.
- For exit levels, there may be two doors, one exit door and a separate door leading out into the interior of the building. At other times the exit is through the public corridor, so the exit and floor level signs are installed together.
- Tactile signs should be mounted on the latch side of the door. Where there is no wall space at the latch side of a single door, signs must be installed on the nearest adjacent wall.
- The ADA requires that the baseline of the lowest raised character* be a minimum of 48" above the finished floor, and the baseline of the highest raised character be a maximum of 60" above the finished floor. (See fig. 1 & 2)

**Note that California properties measure from the baseline of the lowest Braille cells.*

REFLECTIVE FLOOR LEVEL NUMBER (optional)

- Apply the optional 6" reflective number centered below the 18" smoke line. (See fig. 1)

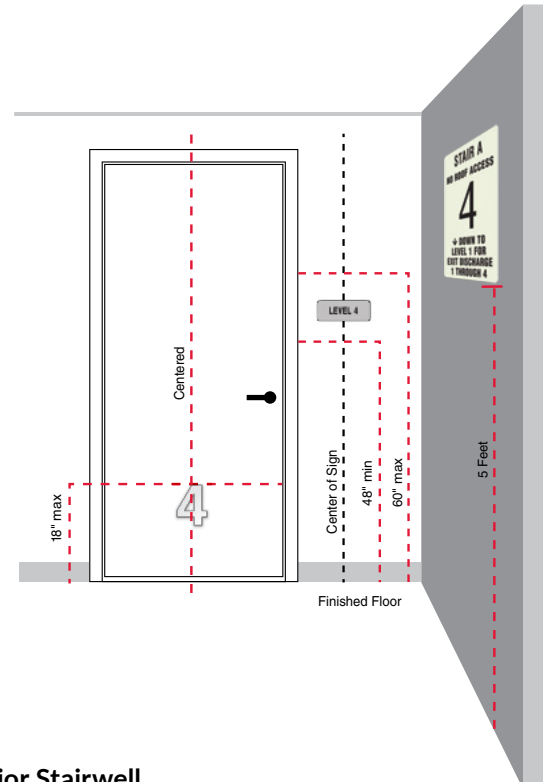
LOW-LEVEL EXIT EGRESS SIGN (exit levels only)

- Install the low-level photoluminescent exit sign inside the stairwell on the final exit door or the door leading to the exit egress path.
- Center the sign on the door with the top of the sign a maximum of 18" above the floor. (See fig. 2)

3.) Install your sign:

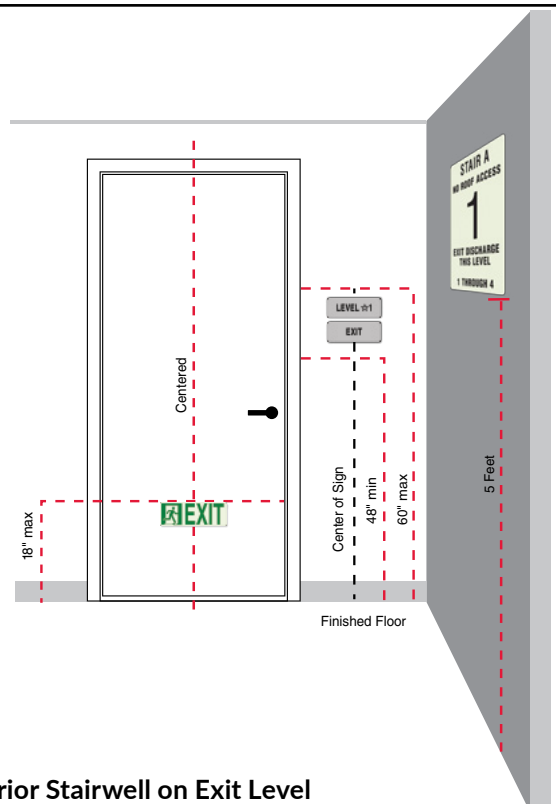
- Each sign comes with adhesive tape for easy installation. Simply remove the adhesive tape backing. Then using a level to ensure the sign is straight, press the sign firmly to the wall.
- We recommend using a silicone construction adhesive in addition to the adhesive tape on the back of the signs.

fig. 1



Interior Stairwell

fig. 2



Interior Stairwell on Exit Level

Emergency Exit Egress Paths

LOW-LEVEL EXIT EGRESS SIGNS

1. Verify the door surface is smooth and free of any dirt or dust. Complete any treatments, such as painting, prior to sign installation.
2. Determine the mounting height for your sign. Install below the smoke line, with the top of the sign a maximum of 18" above the floor. Install on doors that swing away, centered horizontally on the door. (see fig. 3a)
3. In cases where the door swings in towards you, the sign may be installed within 4" of the door frame. (See fig. 3b)
4. Each emergency exit egress sign comes with adhesive tape for easy installation. Simply remove the adhesive tape backing. Then using a level to ensure the sign is straight, press the sign firmly to the wall.

Interior Exit Stairwell: Door Leading to Emergency Egress Route

fig. 3a

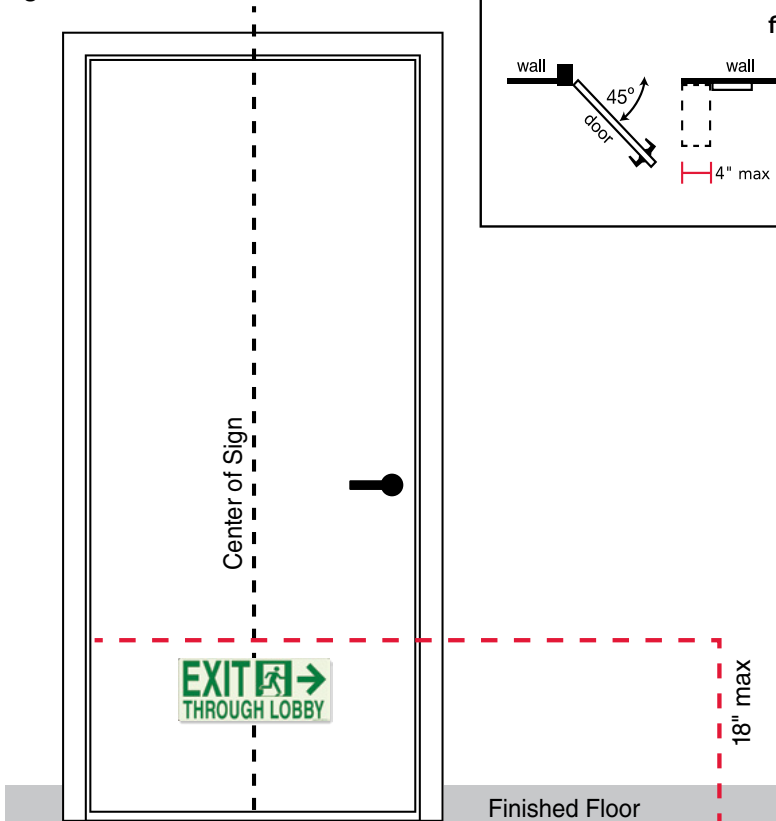
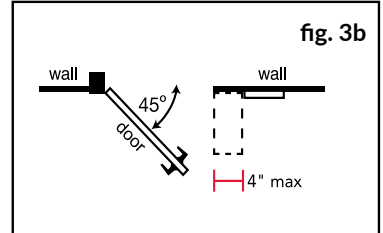
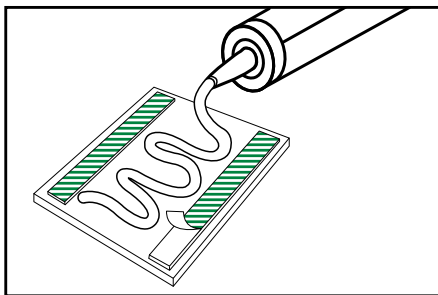


fig. 3b



Silicone Adhesive



When installing signs with silicone adhesive, be sure to read and follow the manufacturer's instructions.

For heavy signs, exterior signs, when applying to textured wall surfaces, or when in doubt, please use a silicone construction adhesive* in addition to the adhesive tape on the back of the sign. Apply silicone adhesive as illustrated and remove the adhesive tape backing. Using a level to ensure the sign is straight, press the sign firmly to the wall.

**Silicone sealant is different from silicone adhesive. Please be sure to use a silicone adhesive to guarantee proper adhesion.*

If you have any questions, or a special installation circumstance, please contact us.

If you have questions about the ADA, or to understand your responsibilities, please visit www.ada.gov. For more information about the NFPA regulations, please visit www.nfpa.org.

**LIFE
OF THE
BUILDING®**
SIGN GUARANTEE

We are committed to your complete satisfaction and will replace any sign at any time due to defects in material or workmanship during the life of your building.